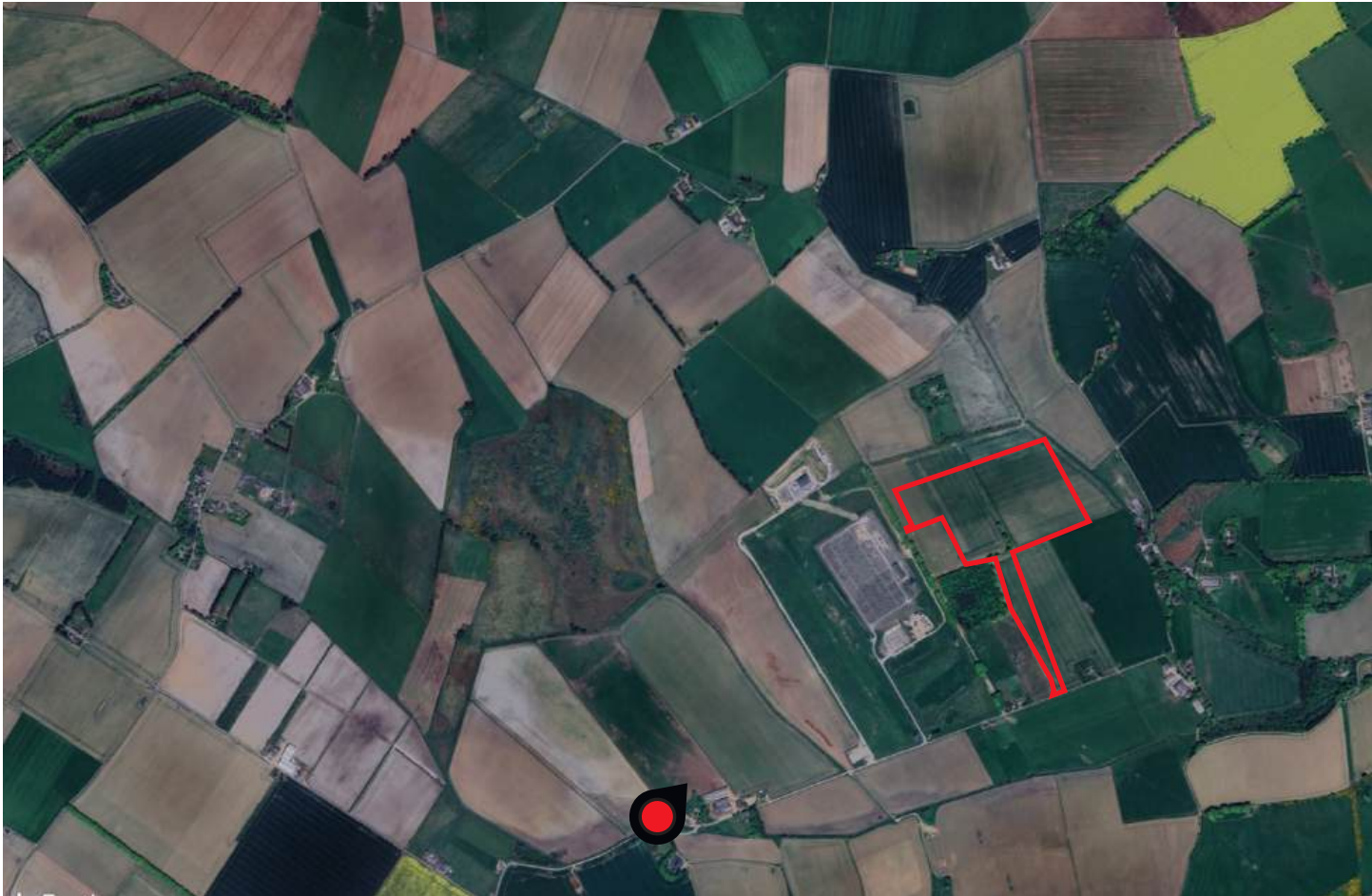


APPENDIX C

Visualisations Pack

Verified Photomontages Sheets 1-45



Viewpoint Location Plan (NTS)

Photomontage Location 1	
Visualisation Type:	Type 4
Projection:	Planar
Enlargement Factor @ A3:	150%
Date and Time:	15.04.25 10:55
Camera make and model:	Canon EOS 5DS R
Camera lens and focal length:	Canon EF 50mm f/1.2L USM
Horizontal Field of View for panorama (HoFV):	135 degrees
Horizontal Field of View for single frame (HoFV):	39.6 degrees
Looking Direction:	North East
Co-ordinates (Eastings and Northings):	E: 368328.556 N: 834782.804
Height of photomontage location (ALT):	137.048m
Camera height:	1.62m
Distance to nearest Site boundary (m):	1.39km



Existing baseline

Extent of single frame



Year 1

Extent of single frame



Year 15

Extent of single frame









Viewpoint Location Plan (NTS)

Photomontage Location 9	
Visualisation Type:	Type 4
Projection:	Planar
Enlargement Factor @ A3:	150%
Date and Time:	15.04.25 11:25
Camera make and model:	Canon EOS 5DS R
Camera lens and focal length:	Canon EF 50mm f/1.2L USM
Horizontal Field of View for panorama (HoFV):	135 degrees
Horizontal Field of View for single frame (HoFV):	39.6 degrees
Looking Direction:	North West
Co-ordinates (Eastings and Northings):	E: 370163.864 N: 835066.902
Height of photomontage location (ALT):	122.391m
Camera height:	1.65m
Distance to nearest Site boundary (m):	510m



Existing baseline

Extent of single frame



Year 1

Extent of single frame



Year 15 - With established planting

Extent of single frame









Viewpoint Location Plan (NTS)

Photomontage Location 10	
Visualisation Type:	Type 4
Projection:	Planar
Enlargement Factor @ A3:	150%
Date and Time:	15.04.25 11:33
Camera make and model:	Canon EOS 5DS R
Camera lens and focal length:	Canon EF 50mm f/1.2L USM
Horizontal Field of View for panorama (HoFV):	135 degrees
Horizontal Field of View for single frame (HoFV):	39.6 degrees
Looking Direction:	North West
Co-ordinates (Eastings and Northings):	E: 370067.284 N: 835416.124
Height of photomontage location (ALT):	133.807m
Camera height:	1.66m
Distance to nearest Site boundary (m):	370m



Existing baseline

Extent of single frame



Year 1

Extent of single frame



Year 15 - With established planting

Extent of single frame









Viewpoint Location Plan (NTS)

Photomontage Location 11	
Visualisation Type:	Type 4
Projection:	Planar
Enlargement Factor @ A3:	150%
Date and Time:	15.04.25 11:50
Camera make and model:	Canon EOS 5DS R
Camera lens and focal length:	Canon EF 50mm f/1.2L USM
Horizontal Field of View for panorama (HoFV):	135 degrees
Horizontal Field of View for single frame (HoFV):	39.6 degrees
Looking Direction:	South West
Co-ordinates (Eastings and Northings):	E: 369902.92 N: 836020.991
Height of photomontage location (ALT):	141.249m
Camera height:	1.66m
Distance to nearest Site boundary (m):	188m



Existing baseline

Extent of single frame



Year 1

Extent of single frame



Year 15 - With established planting

Extent of single frame









Viewpoint Location Plan (NTS)

Photomontage Location 12	
Visualisation Type:	Type 4
Projection:	Planar
Enlargement Factor @ A3:	150%
Date and Time:	15.04.25 12:00
Camera make and model:	Canon EOS 5DS R
Camera lens and focal length:	Canon EF 50mm f/1.2L USM
Horizontal Field of View for panorama (HoFV):	135 degrees
Horizontal Field of View for single frame (HoFV):	39.6 degrees
Looking Direction:	South West
Co-ordinates (Eastings and Northings):	E: 369663.129 N: 836700.983
Height of photomontage location (ALT):	160.785m
Camera height:	1.64m
Distance to nearest Site boundary (m):	804m



Existing baseline

Extent of single frame



Year 1

Extent of single frame



Year 15 - With established planting

Extent of single frame









Viewpoint Location Plan (NTS)

Photomontage Location 14	
Visualisation Type:	Type 4
Projection:	Planar
Enlargement Factor @ A3:	150%
Date and Time:	15.04.25 12:54
Camera make and model:	Canon EOS 5DS R
Camera lens and focal length:	Canon EF 50mm f/1.2L USM
Horizontal Field of View for panorama (HoFV):	135 degrees
Horizontal Field of View for single frame (HoFV):	39.6 degrees
Looking Direction:	South East
Co-ordinates (Eastings and Northings):	E: 368172.879 N: 836897.969
Height of photomontage location (ALT):	180.531m
Camera height:	1.66m
Distance to nearest Site boundary (m):	1.47km



Existing baseline

Extent of single frame



Year 1

Extent of single frame



Year 15 - With established planting

Extent of single frame









Viewpoint Location Plan (NTS)

Photomontage Location 15	
Visualisation Type:	Type 4
Projection:	Planar
Enlargement Factor @ A3:	150%
Date and Time:	15.04.25 13:06
Camera make and model:	Canon EOS 5DS R
Camera lens and focal length:	Canon EF 50mm f/1.2L USM
Horizontal Field of View for panorama (HoFV):	135 degrees
Horizontal Field of View for single frame (HoFV):	39.6 degrees
Looking Direction:	South East
Co-ordinates (Eastings and Northings):	E: 368796.066 N: 837206.842
Height of photomontage location (ALT):	174.376m
Camera height:	1.66m
Distance to nearest Site boundary (m):	1.40km



Existing baseline

Extent of single frame



Year 1

Extent of single frame



Year 15 - With established planting

Extent of single frame









Viewpoint Location Plan (NTS)

Photomontage Location 18	
Visualisation Type:	Type 4
Projection:	Planar
Enlargement Factor @ A3:	150%
Date and Time:	15.04.25 13:20
Camera make and model:	Canon EOS 5DS R
Camera lens and focal length:	Canon EF 50mm f/1.2L USM
Horizontal Field of View for panorama (HoFV):	135 degrees
Horizontal Field of View for single frame (HoFV):	39.6 degrees
Looking Direction:	East
Co-ordinates (Eastings and Northings):	E: 366684.506 N: 835343.604
Height of photomontage location (ALT):	166.798m
Camera height:	1.64m
Distance to nearest Site boundary (m):	2.70km



Existing baseline

Extent of single frame



Year 1

Extent of single frame



Year 15 - With established planting

Extent of single frame









Viewpoint Location Plan (NTS)

Photomontage Location 27	
Visualisation Type:	Type 4
Projection:	Planar
Englargement Factor @ A3:	150%
Date and Time:	15.04.25 12:24
Camera make and model:	Canon EOS 5DS R
Camera lens and focal length:	Canon EF 50mm f/1.2L USM
Horizontal Field of View for panorama (HoFV):	135 degrees
Horizontal Field of View for single frame (HoFV):	39.6 degrees
Looking Direction:	South west
Co-ordinates (Eastings and Northings):	E: 369649 N: 837188
Height of photomontage location (ALT):	166.798m
Camera height:	1.64m
Distance to nearest Site boundary (m):	0.98km



Existing baseline

Extent of single frame



Year 1

Extent of single frame



Year 15 - With established planting

Extent of single frame





